

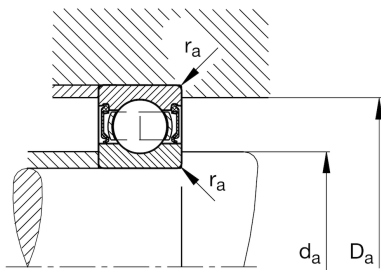
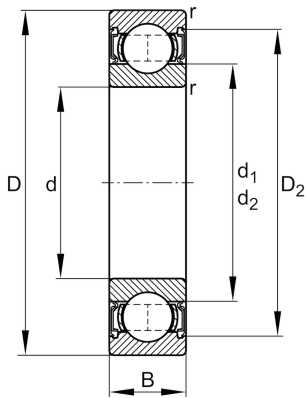
FAG

62209-A-2RSR

Deep groove ball bearing

Schaeffler ID:
0647759760000Deep groove ball bearing 622..-A-2RSR,
single row, steel sheet metal cage

Technical information

**Dimensions**

r_{\min}	1.1 mm	Minimum chamfer dimension
D_2	75.6 mm	Caliber diameter outer ring
d_1	54.4 mm	Shoulder diameter inner ring
	0.489 kg	Weight

Main Dimensions & Performance Data

d	45 mm	Bore diameter
D	85 mm	Outside diameter
B	23 mm	Width
C_r	32,710 N	Basic dynamic load rating, radial
C_{0r}	20,460 N	Basic static load rating, radial
C_{ur}	1,410 N	Fatigue load limit, radial
n_G	4,650 1/min	Limiting speed

Mounting dimensions

$d_{a\min}$	52 mm	Minimum diameter shaft shoulder
$D_{a\max}$	78 mm	Maximum diameter of housing shoulder
$r_{a\max}$	1.1 mm	Maximum fillet radius

Calculation factors

f_0	14.1	Calculation factor
-------	------	--------------------

Temperature range

T_{\min}	-20 °C	Operating temperature min.
T_{\max}	110 °C	Operating temperature max.